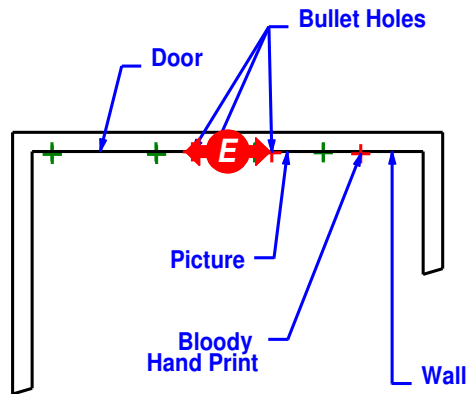
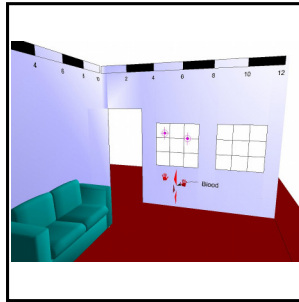
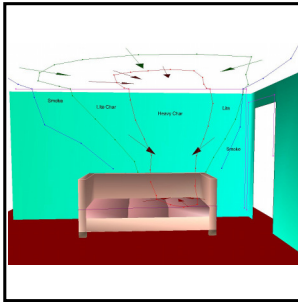
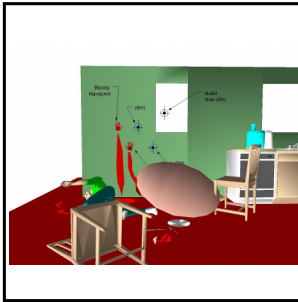
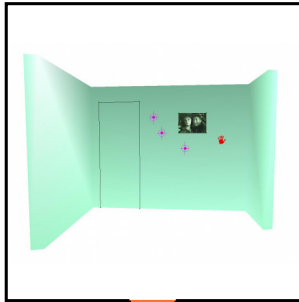


Wall Evidence (WV) - Project 3D Points



1) Pre-Select the points you want projected on your wall before bringing up the wall with the Wall Evidence (WV) tool.

2) You can select an existing 3D point or give a 2D point an elevation with the 3D Builder tool. Use points collected with a total station or photogrammetry program, or imported from the Coordinate Data Table.

3) The selected 3D data points do not have to be directly on the wall to be displayed in Wall Evidence (WV). The selected points will be projected on the wall perpendicular from their X,Y location and elevated at their Z height.

4) In Wall Evidence (WV) you can draw outlines of doors, windows, blood stains, etc...snapping to the projected points. Also use the points as reference markers to place symbols to show bullet holes, hand prints, etc...

