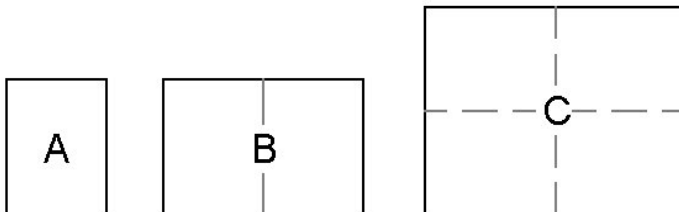


Print Tiling

What is Print Tiling and why would I need it?

Print tiling allows you to print out a drawing greater in size than your printer can handle. A single sheet of 8.5" x 11" paper is commonly referred to as an A-Size sheet of paper. A B-Size sheet of paper is 11" x 17" or two A-Size sheets taped together side-by-side. A C-Size sheet of paper is 17" x 22" or four sheets of A-Size taped together in two columns and two rows. This process continues upward. If you don't have a large paper size plotter then print tiling gives you the ability to put together larger scale plots.



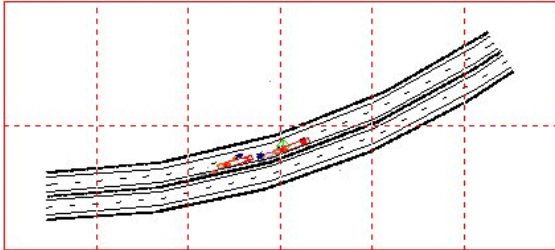
This incredible feat is made possible by printing out parts of the drawing on multiple sheets of paper that are then pieced together like a puzzle to create the complete drawing at the specified scale.

Before a drawing will tile certain conditions need to be met:

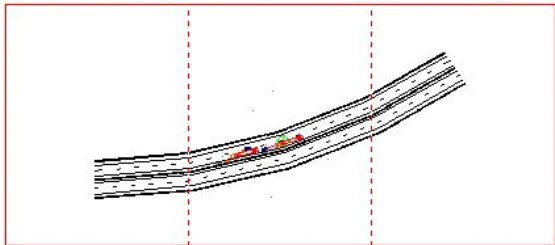
a) The "Scale" radial button must be selected. The other two selections do not allow tiling. "Fit to Paper" will fit the entire diagram on a single sheet of paper. "Current View" will display the current zoomed view of the diagram on the drawing screen and print out on a single sheet.

b) The “Print Scale” must be set to a scale the requires more then one sheet of paper for the drawing to fit. As the scale value get decreases, the number of panels increases. For example, it takes more panels to print a diagram at 1" = 20' than 1" = 50'.

Example: 1" = 20'



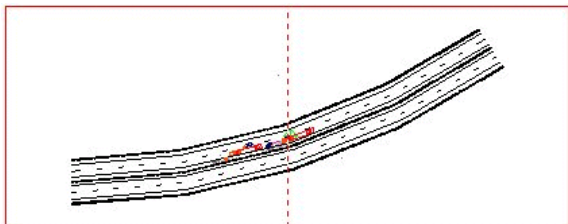
Example: 1"=50'



c) After setting the scale click on the “Update” button to see your results. You will need to “Update” everytime you enter a new scale to see the effect it has on the drawing.

d) **Hint - Switching between “Portrait” and “Landscape” may result in fewer panels needed to print out the drawing.**

Example: 1"=50' with a different paper orientation (less panels needed!)



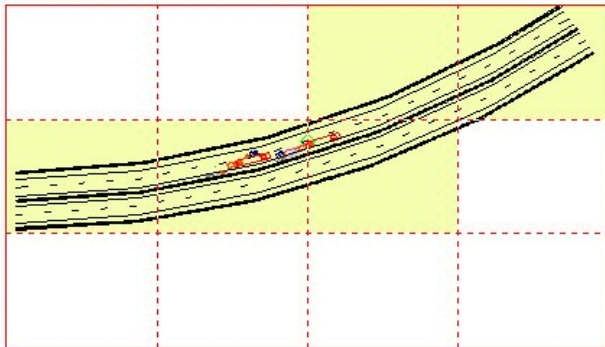
e) The message below the print display will tell you how many panels you’ll be printing and the total number of columns (number of panels horizontally) and number of rows (number of panels vertically).

f) Select “Print” to print out all of your panels. A message will pop up telling you how many panels you’re about to print, giving you a chance to Cancel the print. This is handy in case you didn’t intend to print multiple sheets of paper.

4) **Advanced Tiling Features**

a) **Printing Individual Panels:** You can click on individual panels in the print display. Each panel clicked on will be highlighted with a yellow background. When you select the “Print” button, only the selected (highlighted) panels will print. This will come in handy if you want to print out a particular piece of the drawing or if you want to avoid printing blank panels.

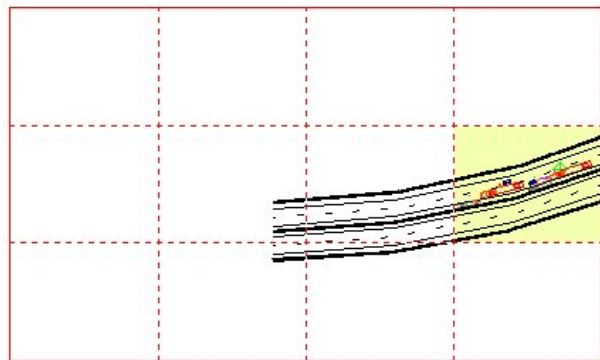
Select Panels.jpg



Hint - You may have blank panels depending on the shape (content) of the drawing especially if you drag the drawing to fit better in the panels and intentionally drag the drawing out of some panels.

b) **Positioning the Drawing:** Once **“Print Scale”** has been established you can drag the drawing around inside the panels. Depending on the shape of the drawing, you might be able to get the drawing to fit better in the panels. Just move your cursor over the display, hold down your left mouse key, and drag the drawing to a new position.

Example: Drag drawing for a better fit inside the panels



5) **Page Marks and Stamps**

Since your printer can't print to the edge of a sheet of paper you will need to trim your panels before taping them together. In the **“Stamp”** section of the print dialog you'll find the **“Page Marks”** selection. You can select **“None”**, **“Corner”**, or **“Outline”**.

Use **“Corner”** marks if you have chop block you can lay a sheet of paper on, line up the corners, and pull down the blade to trim the edge away.

Use **“Outline”** so you can use scissors to trim the excess paper away.

The **“Stamp”** selections, if checked, will print the selected stamp(s) at the bottom of the page.

“Page numbers” will print on each panel showing the column and row of each sheet. This comes in handy if you have a lot of sheets and need to verify position of individual sheets.

“Filename” will print the drawing path and name.

“Date” will print the current date.

“Scale” will print the actual scale the diagram was printed at.